



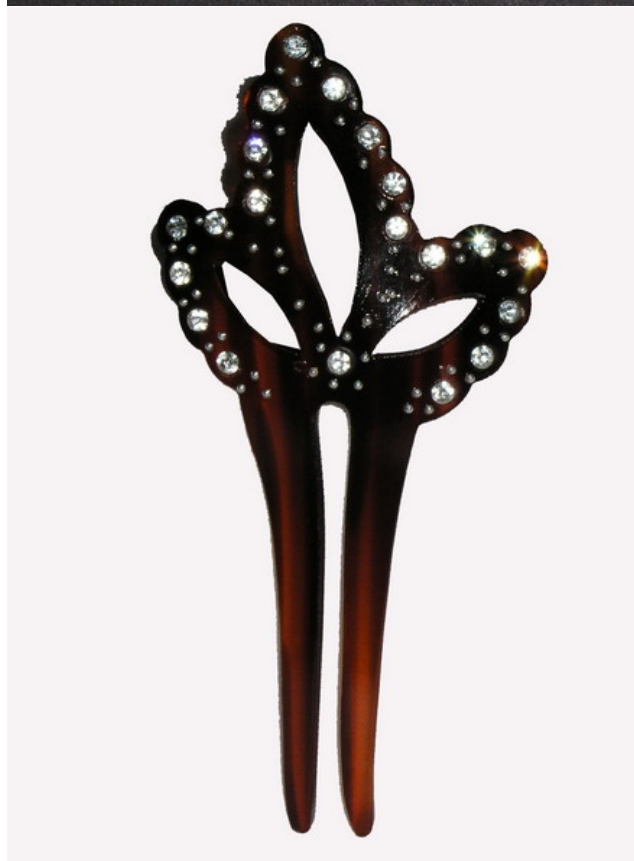
○ Small Mother of Pearl/Shell Ornamental Comb With Strass- ref. S936



13.00 €
14.17 USD



■ Colour:





Mini **comb** exquisitely hand carved. The comb is made of cellulose acetate. Its composition gives to the comb a special shine and imitates very well mother-of-pearl as carey.

Measurements: 5 cm (wide) x 10.5 cm (high).

We do not allow any refund for this article, we only allow an exchange for another model.

■ **Product details:**

